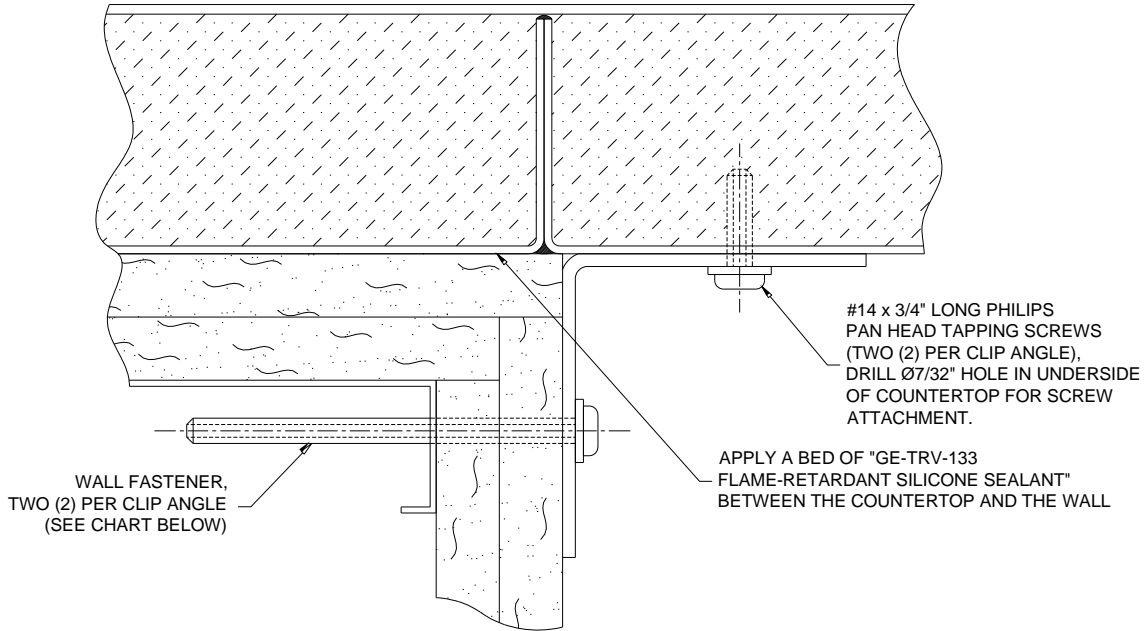
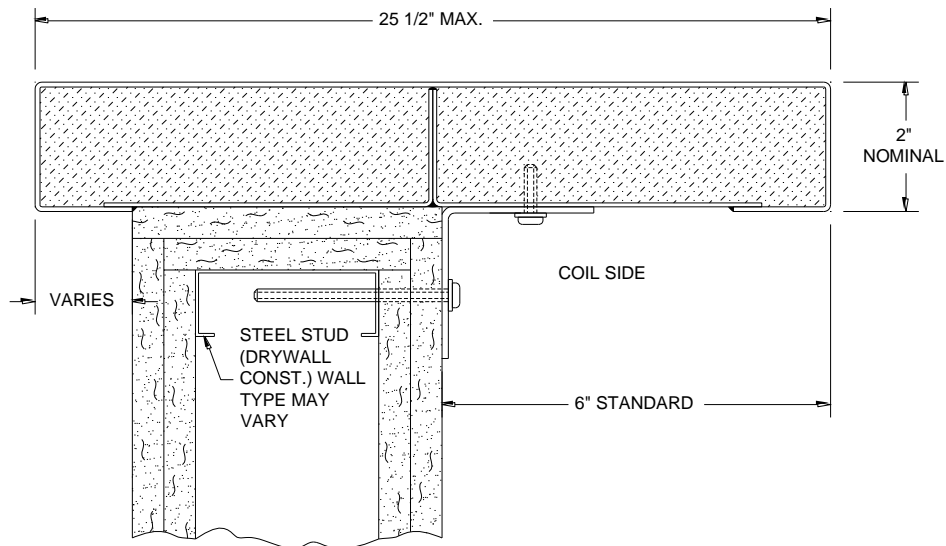


**STAINLESS STEEL COUNTERTOP INSTALLATION**



WALL CONSTRUCTION	WALL FASTENER TYPE
MASONRY	Ø1/4 x 1 3/8" LONG EXPANSION BOLT
DRYWALL - SHEET METAL OR WOOD STUDS	#14 x 3" LG. PHILLIPS PAN HEAD TAPPING SCREW
STEEL CHANNEL	1/4-20 x 3/4" LG. ROUND HEAD SCREW



### STAINLESS STEEL COUNTERTOP INSTALLATION

Before permanently installing the countertop into the opening it is advisable to check it for proper fit. Unpack the countertop from the shipping crate and lay it on a clean flat surface. The standard countertop is built to allow a 1/8" clearance dimension between the edges of the countertop at all points where it contacts the wall. The portion of the countertop projecting through the wall opening should be 1/4" less than the actual wall opening. The countertop can be placed into the opening to check the fit prior to permanent installation.

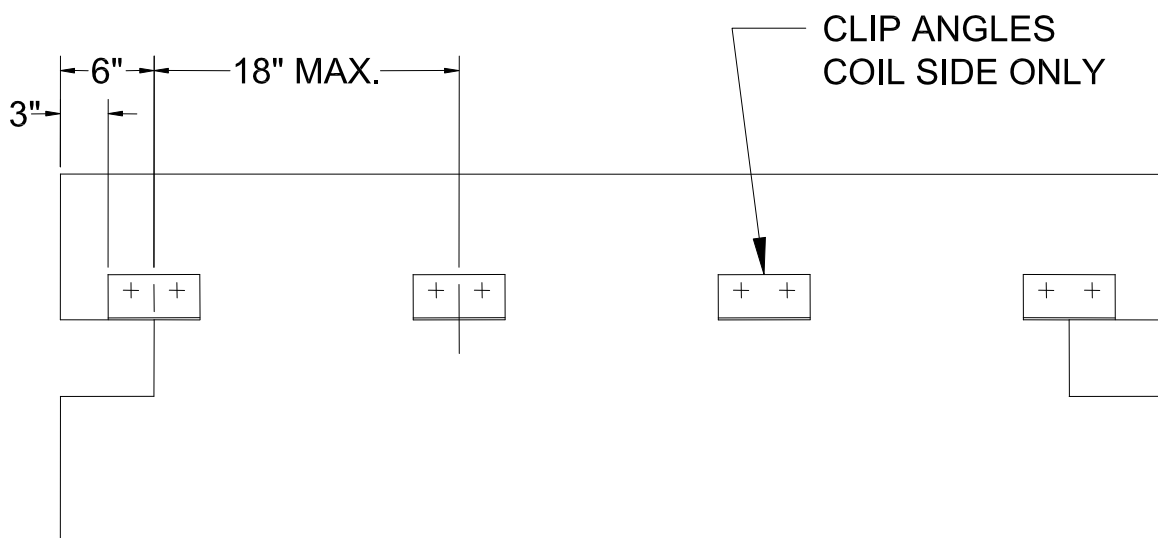
After checking the fit remove the countertop and begin preparation of the opening for the permanent installation. The upper face of the wall opening on which the countertop will sit should be smooth, level and free of dust, dirt or other debris. When ready to install the countertop apply the flame retardant silicone sealant, supplied with the hardware, to the upper face of the wall. This material should be applied using a standard caulking gun and applying a generous bead down the entire length of the wall opening. The number of beads required should be determined by the thickness of the wall. Please be careful to hold the beads back from the edge of the opening so the sealing material does not squeeze out and run down on to the face of the finish wall. As soon as the sealant is applied the countertop should be installed, adjusted and leveled before the sealant begins to set up. Firm, equal, downward pressure may be used to gently press on top of the countertop to set it in place and assure proper contact and adhesion to the silicone sealant. Use caution in this procedure so as not to mar or damage the stainless steel surface.

Next install the support angles beneath the countertop at the locations shown in the details. These angles and fasteners are supplied as part of the hardware package and should be installed according to the layout in the details shown. When fastening the clip angles to the underside of the countertop be certain to use the shorter fasteners supplied. Additional support must be provided by others when the projection dimension on either side of the opening exceeds 6" or the countertop may become unstable in the opening.

**Note:**

Clip angles are not supplied on the public side. Coil side clip angles are always supplied and must be used to properly attach the countertop to the wall.

"H" type countertop is shown; layout is typical for "T" and rectangular configurations also.



CLIP ANGLE LAYOUT – UNDERSIDE OF COUNTERTOP SHOWN