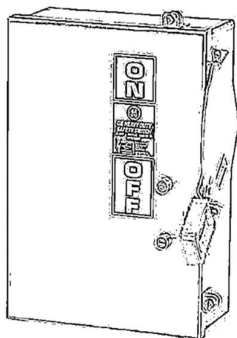


Smartsync Wireless Quick Start Guide

ECO# 2159 REVISION# 002

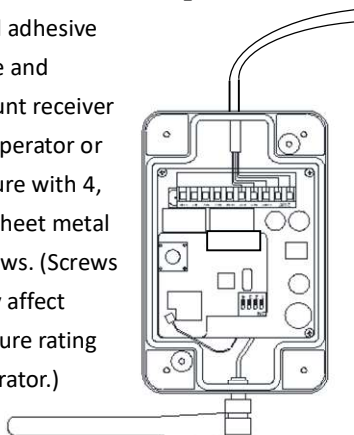
ES 10-452 DATE 05/17/2022

Step 1: Power OFF the operator



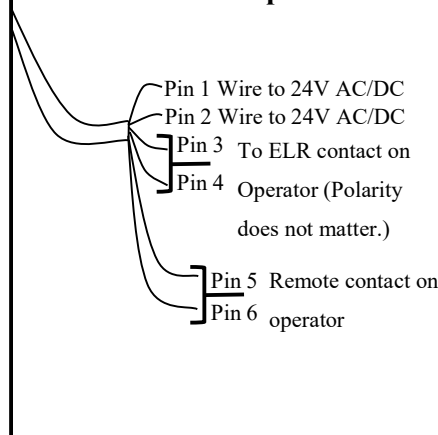
Step 2: Mount Receiver to Operator

Peel adhesive tape and mount receiver to operator or secure with 4, #4 sheet metal screws. (Screws may affect closure rating operator.)



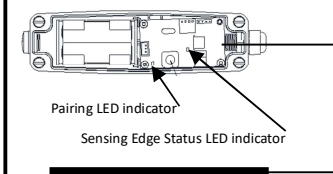
Step 3: Wire Receiver to Operator

- Pin 1 Wire to 24V AC/DC
- Pin 2 Wire to 24V AC/DC
- Pin 3 To ELR contact on
- Pin 4 Operator (Polarity does not matter.)
- Pin 5 Remote contact on
- Pin 6 operator

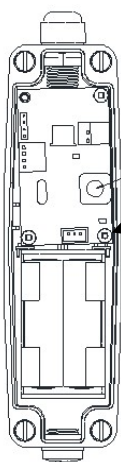


Step 4: Wire Transmitter to Sensing Edge

Connect the sensing edge to the terminal block.



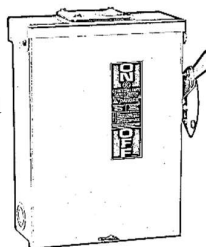
Step 5: Put Transmitter into Pairing Mode



Press and hold pair button, green LED should start flashing.

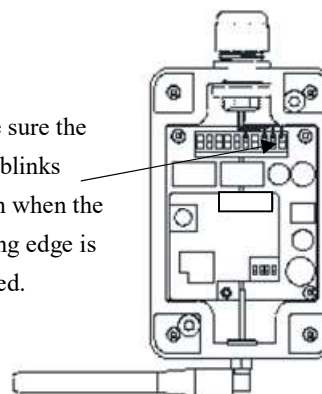
Step 6: Power ON the operator immediately

Power on operator. The receiver will beep once when pairing is successful. If Tx LED turns yellow, pairing failed. Hold the transmitter button until the LED flashes yellow, then power off the motor and go back to step 5.



Step 7: Press the Sensing Edge to Test Connection

Make sure the LED blinks Green when the sensing edge is pressed.



Step 8: Test the Sensing Edge Function with Door

If the sensing edge feature does not function as expected; please refer to the manual for detailed info.

**Call customer service:
+1-800-294-4358**