

FIREGARD™ FGH MOTOR OPERATOR

Fire Door Operator

STANDARD FEATURES AND BENEFITS

- ▶ Activates door without releasing spring tension
- ▶ Auxilliary Chain Hoist
- ▶ Fusible link activation
- ▶ Slow and controlled average closing speed of 9"-12" per second
- ▶ Compact design
- ▶ Easy installation
- ▶ Rated for up to 20 cycles per day

OPTIONS

- ▶ Operator cover
- ▶ Failsafe release device
- ▶ Battery backup for release device
- ▶ Obstruction sensing devices



RECOMMENDED APPLICATIONS

- ▶ Where manual testing and resetting is not convenient
- ▶ Where chain hoist backup operation is required
- ▶ Where a connection to a fire alarm system is not desired
- ▶ When older, conventional style fire doors can be made UL compliant by retro-fitting

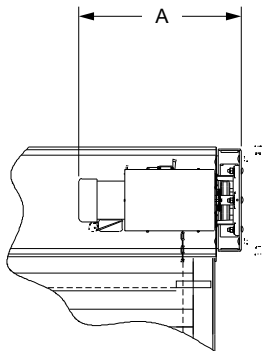
STOCKED MODELS

Model	FGH-33	FGH-50	FGH-75	FGH-100	FGH-150	FGH-200
Horsepower	1/3 HP	1/2 HP	3/4 HP	1 HP	1 1/2 HP	2 HP
Voltage /Phase	115V, 230V 1ph or 230V, 460V, 575V 3ph		115V, 230V 1ph or 230V, 460V 3ph		380V, 400V, 415V 3ph	
Frequency	60 Hz		60 Hz		50 Hz	
Auxiliary Hand Chain	Yes		Yes		Yes	

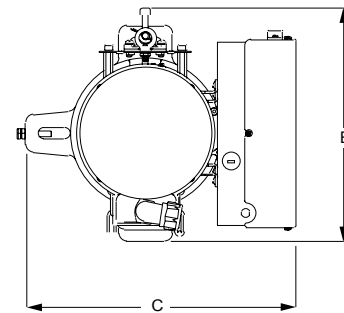
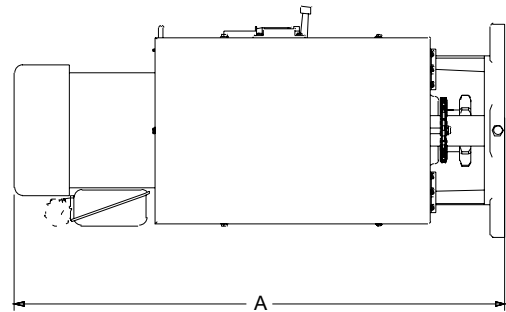
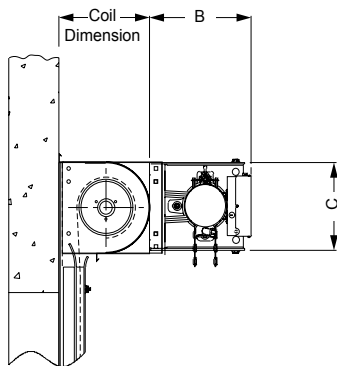
Additional 50 Hz and 60 Hz configurations are available, but may require an additional lead time. Please contact factory for details.

FIRE DOOR MOUNTING OPTIONS

FRONT OF COIL ELEVATION



FRONT OF COIL SECTION



DIMENSIONS

	A	B	C
1/3 HP	25 7/8	14 1/8	11 1/4
1/2 HP	25 7/8	14 1/8	11 1/4
3/4 HP	25 7/8	14 1/8	11 1/4
1 HP	25 5/16	14 1/16	11 3/16
1 1/2 HP	25 5/16	14 1/16	11 3/16
2 HP	217 1/18	15 5/16	11 7/16

DIMENSIONS

	A	B	C
1/3 HP	18.048	9.685	10.81
1/2 HP	18.836	9.685	10.81
3/4 HP	23.3	11.1	11.7
1 HP	21.61	11.134	11.014
1 1/2 HP	21.61	11.134	11.014
2 HP	24.37	11.483	13.543