

COOKSON®

EXTREME SERIES™

POWERED BY **LiftMaster**



EX904N/EX904UN HIGH PERFORMANCE SECTIONAL DOOR SYSTEM

The Cookson® Extreme Series™ High Performance Sectional Door System boasts an average opening speed of 24" per second, allowing productivity to flourish while also delivering a contemporary aesthetic that allows spaces to make the most of natural light, thanks to full-view windows. Tandem nylon rollers improve roller life and reduce running noise for smooth, quiet operation while safety stays top of mind with enhanced features such as 3' of light curtain protection, a cable management system and standard cable tension monitors.

cooksondoor.com



ALUMINUM FULL-VIEW DOORS

Cookson's EX904N possesses a sleek design with fewer lines and angles. It has equal stile spacing with rail and stile profiles more proportional to each other. This design provides an aesthetically pleasing appearance, making it ideal in applications such as auto dealerships and fire stations. The EX904UN also features polyurethane insulated rails and stiles.

PANEL OPTIONS



Aluminum Full-View



Solid Aluminum

HARDWARE FEATURES



Double end stiles to improve hinge longevity



Long stem tandem rollers provide longer roller life and quieter door operation



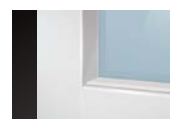
Cable snubbers to keep tension on the cable to prevent it from coming off of the drum



Pusher springs are used to prevent cable slack (required for standard lift track)



50,000 cycle springs standard[†]



Frame Detail



Section Joint Seal



Reinforcing Fin (where applicable)



Model EX904UN*

Model EX904N

*Model EX904UN R-value 3.8 with clear insulated glass.

STANDARD SPECIFICATIONS

Max Width	16'2"
Max Height	14'0"
Max Door Weight	1,000 lbs
Upward Travel	24" per second
Downward Travel	15" per second
Door Thickness	2-1/8"
Insulation	Polyurethane (Model EX904UN)
R-Value*	3.8 (Model EX904UN with clear insulated glass)
U-Factor	0.86 (Model EX904UN with clear insulated glass)
Air Infiltration	0.15 cfm/ft ²
Stiles	Double end stiles (standard)
Panel Style	Full-view or solid aluminum panel
Section Construction	6063-T5 extruded aluminum alloy
Glazing Available	Tempered, insulated tempered, acrylic and polygal
Solid Panels	Insulated and non-insulated aluminum panels
Springs	50,000 cycle standard [†] (Max cycles available on a single shaft line)
Track Size	2" angle mount track standard 3" track where applicable
Track Type	Standard lift, high lift and full vertical lift

*Calculated door section R-value is in accordance with DASMA TDS-163.

[†]Cycles can vary depending on door configuration.

COOKSON® EXTREME SERIES™ OPERATOR POWERED BY LIFTMASTER®

The Extreme Series™ High Performance Sectional Door System features a direct drive operator with an opening speed of 24" per second and up to 600 cycles per day. The display's easy-to-read user interface provides ease of limit-setting at floor level and can connect to the operator via Wi-Fi to myQ® Facility.

SAFETY FEATURES



UL325 approved light curtain that reverses the door's downward motion when the beam is broken



Cable tension monitor that mitigates door operation when cable slackening occurs



Optional wireless bottom safety edge that reverses the door's downward motion upon contact with an object



PERFORMANCE REQUIREMENTS

Average Opening Speed	24" per second
Average Closing Speed	15" per second
Daily Duty Cycles	600 cycles/day
Max. Door Weight	1,000 lbs.
Warranted Cycles	600 cycles per day over 2-year warranty period
Drive System	Direct drive

INSTALLATION AND COMMISSIONING

Motor Design	1.25 HP configuration serving single phase 115V/230V and 3-phase 230V configurations; 3-phase 460/575V available with accessory transformer
Wall Controller	Separation of low and high voltage wiring – includes functionality of 3-button station, PLUS setting door profile, programming limits, diagnostics
Programming	Complete the following programming at floor level: set limits; choose door profiles for speed; set operating modes; select photo entrapment devices
Display	Provides textual status indications including: <ul style="list-style-type: none">■ Absolute cycle count■ Service cycle count■ Diagnostics messages■ Door/operator status
Cycle Counter	Re-settable cycle counter via the wall controller and/or through myQ® Facility
Limit Setting	Simple electronic push-button setup via the wall controller

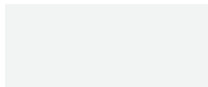
CONNECTIVITY

Wi-Fi Connectivity	Connectable solution via built-in Wi-Fi
myQ® Facility Subscription	First year myQ® Facility subscription included
Over-the-Air Updates	Standard via Wi-Fi
Service Cycle Count	On wall controller display; standard via myQ® Facility
Lifetime Cycle Count	On wall controller display; standard via myQ® Facility
Remote Diagnostics	On wall controller display; standard via myQ® Facility

FRAME/SOLID PANEL COLOR OPTIONS



Clear Aluminum (Anodized)



Standard White (Painted)



Bronze (Painted)



Chocolate (Painted)



Bronze (Anodized)*



Black (Anodized)*



Dark Bronze (Anodized)*

** Additional cost and lead time may apply. The use of "Bronze (Painted)" is recommended due to slight color variation that may occur during the anodizing process.*

CUSTOM PAINT OPTIONS

Color Blast® finish paint system or RAL Powder Coating give you thousands of color options for endless upgrades. See your Clopay Dealer for details.



COLOR BLAST®



Model EX904UN not available with RAL Powder Coat finish.



GLASS/PANEL OPTIONS



Clear Tempered Glass



Gray Tinted
Tempered Glass



Bronze Tinted
Tempered Glass



Clear Acrylic



Gray Acrylic



White Acrylic



Clear
Polycarbonate

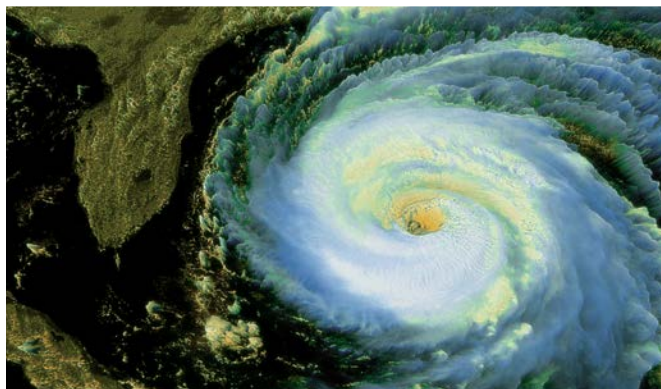


Bronze
Polycarbonate



Aluminum Panel
(Color-matched)

**Glass/acrylic panels may be combined with aluminum panels. Custom glass and colors available.*



WINDCODE®

Design pressures (DP) up to 36 PSF depending on door size, configuration and exposure. Models tested 50% greater than DP.

Building code officials, builders, insurance companies and building owners are increasingly aware of the need for structures to withstand high winds resulting from hurricanes, tropical storms and other weather related events.

With the introduction and adoption of the International Building Code in most areas of the U.S., wind load is no longer an issue exclusive to Florida and other hurricane prone areas.

Clopay Corporation has developed a unique WindCode® door ID program to help you select the right garage door. It includes factors like local building code, MPH requirements, exposure level and mean roof height.



COOKSON Preferred door solutions®



ARCAT

WORLDWIDE
DASMA
Door & Access Systems
International

IDA www.doors.org

For more information on these and other Cookson products, visit cooksondoor.com. Architects and specifiers, visit architectdoorhelp.com.



MADE IN USA

©2022 Cornell/Cookson, LLC. All rights reserved. Color Blast, and WindCode are registered trademarks of Clopay Corporation.

CKSN-EX900NSS-22