



A RELIABLE ACCESS CONTROL AND EGRESS SOLUTION

ZONING

CrossingGard® Door with ThreatProtect™ gives you the option of a safe exit for evacuation or secure zoning during lockdowns—along with daily public access control. Useful for both interior and exterior applications, rolling steel doors securely compartmentalize your building.

ALARM RESPONSIVENESS

The operator on this door integrates with your existing alarm system. Allowing the door to quickly close during a lockdown event and lockdown procedures to zone and section the building keeping out hostile threats. It also opens when the fire alarm is triggered to provide safe egress for occupants.

ELEVATED SAFETY FEATURES

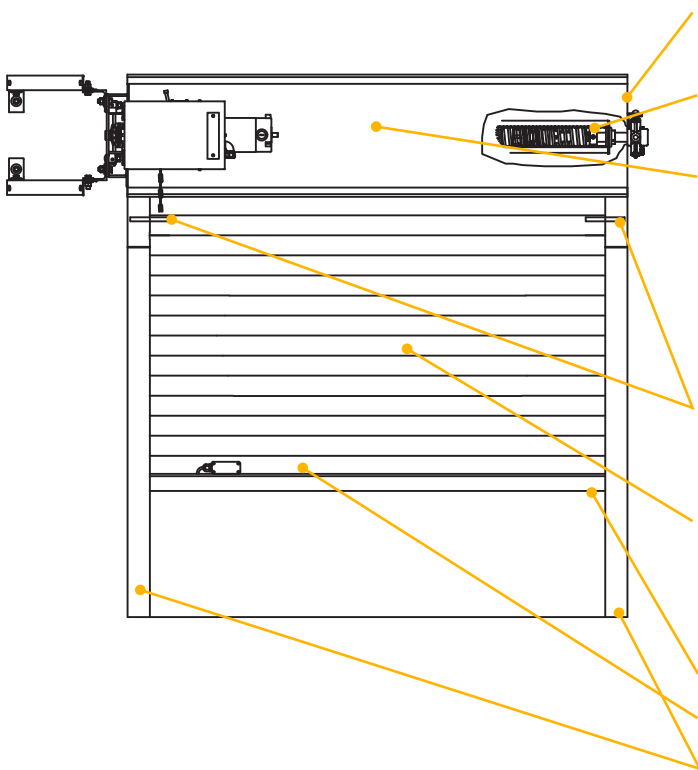
The specialized ThreatProtect Operator features a battery backup that ensures that the door will continue to operate in the event of a power outage. This door also comes standard with a UL325 compliant sensing edge that prevents the door from closing on an object.

ELEVATED SECURITY

The CrossingGard® Door with ThreatProtect™ offers the elevated security of a rolling service door with the ability to customize to meet the needs of your specific application. This is also available in an insulated model or with a ScreenGard™ perforated curtain to offer visibility to first responders.

SECURITY & EMERGENCY EGRESS **CROSSINGGARD® DOOR** with **THREATPROTECT™** Model ERD-TP

STANDARD COMPONENT MATERIALS AND FINISHES



BRACKETS - Steel with powder coating to match curtain. Bolt to guide assembly and support counter-balance shaft and curtain.

COUNTER-BALANCE SHAFT - Steel. Supports curtain and contains torsion springs for assisting operation.

HOOD - Galvanized steel with GalvaNex™ polyester enamel finish to match curtain. Encloses the curtain that provides weather resistance at the header of the door.

OPERATOR - Specialized operator allows the grille to automatically open during a fire alarm to allow safe egress and close during a hostile threat. Includes battery backup.

REMOVABLE BELLMOUTH - Structural steel with powder coating in Gray, Tan, White or Brown. Located at the top of the inner and outer guide angles, coped and flared.

CURTAIN - Galvanized steel with GalvaNex™ polyester enamel finish in Gray, Tan, White, Black, or Brown. Interlocking roll-formed slats with endlocks riveted to the ends of alternate slats to maintain slat alignment and prevent wear.

WIRELESS SENSING EDGE - UL325 Compliant sensing edge

BOTTOM BAR - Heavy-duty extruded aluminum in mill finish.

GUIDES - Structural steel with powder coating to match curtain. Bolt to the wall and support the weight of the door.

STRUCTURAL REQUIREMENTS

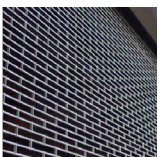
This product is supported by a guide assembly attached to the jamb construction. No additional header support is required unless hood supports are mandated by a larger opening width.

ALSO AVAILABLE IN

- ▶ Grille
- ▶ Insulated Door
- ▶ Counter Shutter
- ▶ ScreenGard™ Perforated Door

OPTIONAL MATERIALS AND FINISHES

- ▶ Aluminum in Mill, Clear or Color Anodized
- ▶ Stainless Steel - 300 series in #4 finish
- ▶ SpectraShield® Powder Coating in more than 180 colors
- ▶ For a more durable finish, consider upgrading to our GalvaNex Ultra™ or SpectraShield Ultra™ powder coat finish
 - It is a polyester based textured wear resistant clear coat that provides increased resistance to corrosion of the curtain and improved durability against normal abrasion and scratching due to cycling



CUSTOM-DESIGNED SOLUTIONS

Contact our experienced Architect Design Support Team for help in customizing our products to fit your specific application.

 www.architectdoorhelp.com