

INSULATED ROLLING DOOR

# THERMISER® DOOR

Models ESD20 & ESD20W (operational wind-load)



## MAINTAIN TEMPERATURES AND REDUCE SOUND TRANSMISSION

### ENERGY-EFFICIENT CLIMATE CONTROL

Made for interior and exterior openings, Thermiser Doors offer a high-impact solution for environmental separation in settings where climate control, energy efficiency, and product protection are a must.

### ADVANCED INSULATION

Thermiser Doors are engineered with advanced, foamed-in-place polyurethane foam insulation—a process that fills air gaps in the slats, significantly increasing thermal resistance. Plus, the foam adds strength and improved sound attenuation.

### SOLID UPGRADE

Change isn't what you see; it's experienced. Thermiser Doors create a more comfortable environment for employees while safeguarding equipment and goods. This helps prevent financial loss and keeps employees productive.

### A WISE INVESTMENT

Thermiser Doors benefit your bottom line, with lower utility bills, minimal maintenance, and streamlined operations. Doors come with a 2-year/50,000-cycle warranty, covering defects in material and workmanship.

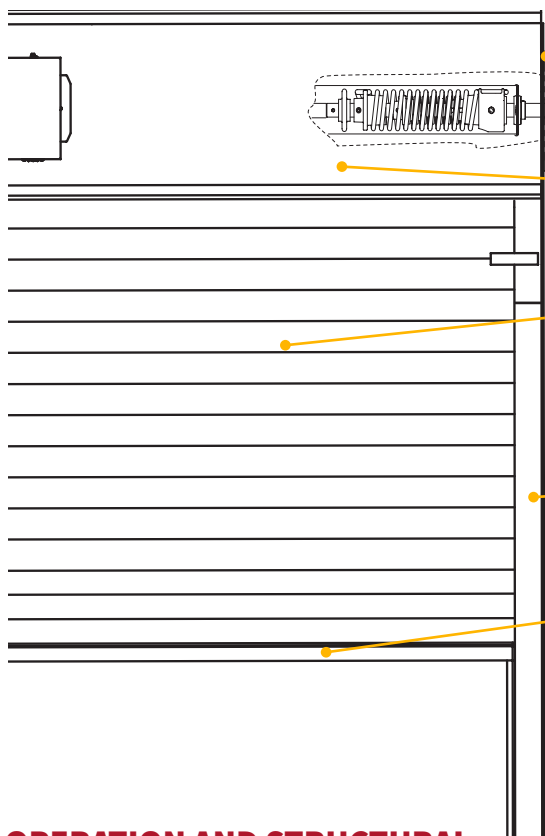
800.233.8366 | [cornelliron.com](http://cornelliron.com)

CornellCookson, LLC. is an ISO 9001:2015 registered company  
8.2025

**CORNELL**  
Innovative door solutions.®

## INSULATED ROLLING DOOR **THERMISER® DOOR** Models ESD20 & ESD20W (operational wind-load)

### STANDARD COMPONENT MATERIALS AND FINISHES



**BRACKETS** - Steel with powder-coated finish to match the curtain. Bolts to guide assembly and support counter-balance shaft and curtain.

**COUNTER-BALANCE SHAFT** - Steel, supports the curtain and contains torsion springs for assisting operation.

**HOOD** - Galvanized steel with GalvaNex™ polyester enamel finish to match the curtain. Encloses the curtain and provides weather resistance at the head of the door.

**CURTAIN** - Galvanized steel with GalvaNex™ polyester enamel finish in Gray, Tan, White, Black, or Brown. Flame Spread Index of 0 and a Smoke Developed Index of 10, as tested per ASTM E84. Slat has an R-value of 8.0 as calculated using the ASHRAE Handbook of Fundamentals.

**GUIDES** - Structural steel with powder coating to match the curtain. Angle assemblies bolt to the wall and support the weight of the door.

**BOTTOM BAR** - If width is less than 24'5", extruded aluminum supplied in mill finish. If width is greater than 24'5", steel supplied with powder coating to match curtain.

### OPERATION AND STRUCTURAL REQUIREMENTS

**Hand chain, hand crank, and a variety of motor options are available.**

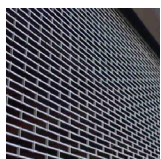
This product is supported by a guide assembly attached to the jamb construction. No additional header support is required unless hood supports are mandated by a larger opening width.

### OPTIONAL MATERIALS AND FINISHES

- ▶ Aluminum in Mill, Clear and Color Anodized.
- ▶ Stainless steel - 300 series in #4 finish.
- ▶ 316 stainless steel in #4 finish.
- ▶ Spectrashield® Powder coating in more than 180 colors.
- ▶ For a more durable finish, consider upgrading to our GalvaNex Ultra™ or SpectraShield Ultra™ powder-coat finish.
  - A polyester-based, textured, wear-resistant clear coat that provides increased resistance to corrosion and improved durability against normal abrasion and scratching from cycling.

#### Brackets, Guides and Bottom Bar

- ▶ Hot-dip galvanizing on steel components.
- ▶ Zinc-enriched, corrosion-resistant powder coating in Gray.



### CUSTOM-DESIGNED SOLUTIONS

Contact our experienced Architect Design Support Team for help in customizing our products to fit your specific application.

 [www.architectdoorhelp.com](http://www.architectdoorhelp.com)