

TRUCYCLE™ SERVICE DOOR

Models HCESD10 (service door curtain) & HCESD30 (insulated curtain)



ENGINEERED FOR 500,000 CYCLES OF PURE DEPENDABILITY

HIGH-CYCLE, LOW-HASSLE PERFORMANCE

Experience continuous operation and maximum cycle life with the TruCycle™ Door. Built on over a century of innovation, this door is an investment in the efficiency of your facility. Specially engineered to handle heavy, continuous traffic, the TruCycle Door ensures ultra-high cycle capability. Our smart design removes traditional springs—a conventional point of failure on standard doors—delivering low-maintenance reliability and virtually eliminating unexpected downtime.

CONFIDENCE IS GUARANTEED

To ensure consistent, cycle-to-cycle performance, every TruCycle Door includes a powerful 3-year or 500,000-cycle warranty, whichever comes first.

EASY & INTUITIVE CONTROL

The TruCycle Door utilizes a direct-drive operator with a motor-mounted Variable Frequency Drive (VFD). This provides precision control and allows for a soft start and stop, extending the life of your door system. The operating system pairs with the APEX™ Core SmartController, putting reliable performance diagnostics at your fingertips. Our smallest-ever controller features a smart interface with an integrated LCD screen and simplified wiring for effortless ground-level commissioning.

APPLICATIONS

The TruCycle Door system is ideal for high-volume environments like loading docks, major logistics centers, and demanding parking structures that require continuous and reliable access. Also available in an insulated HCESD30 model.

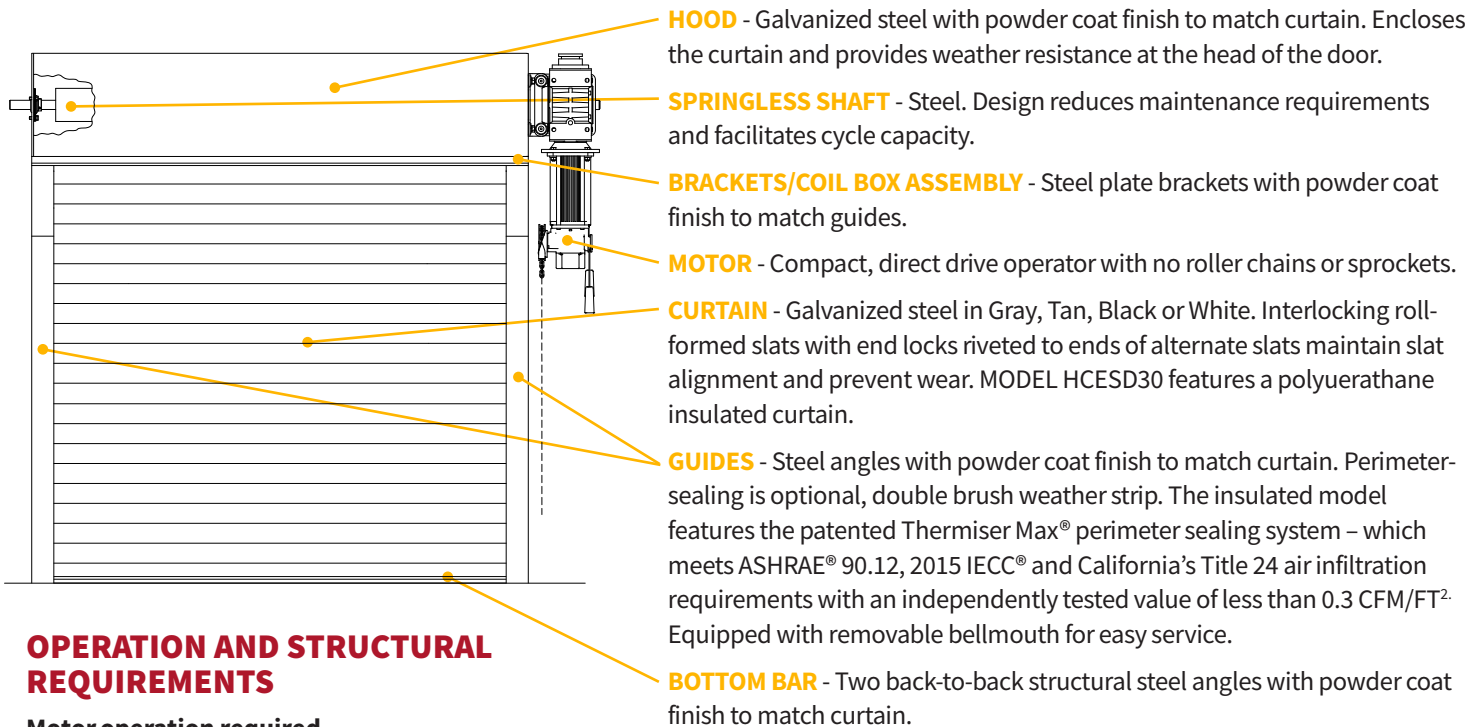
800.233.8366 | cornelliron.com

CornellCookson, LLC. is an ISO 9001:2015 registered company
4.2026

CORNELL
Innovative door solutions.™

TRUCYCLE™ SERVICE DOOR Models HCESD10 & HCESD30 (insulated)

STANDARD COMPONENT MATERIALS AND FINISHES



HOOD - Galvanized steel with powder coat finish to match curtain. Encloses the curtain and provides weather resistance at the head of the door.

SPRINGLESS SHAFT - Steel. Design reduces maintenance requirements and facilitates cycle capacity.

BRACKETS/COIL BOX ASSEMBLY - Steel plate brackets with powder coat finish to match guides.

MOTOR - Compact, direct drive operator with no roller chains or sprockets.

CURTAIN - Galvanized steel in Gray, Tan, Black or White. Interlocking roll-formed slats with end locks riveted to ends of alternate slats maintain slat alignment and prevent wear. MODEL HCESD30 features a polyurethane insulated curtain.

GUIDES - Steel angles with powder coat finish to match curtain. Perimeter-sealing is optional, double brush weather strip. The insulated model features the patented Thermiser Max® perimeter sealing system – which meets ASHRAE® 90.12, 2015 IECC® and California's Title 24 air infiltration requirements with an independently tested value of less than 0.3 CFM/FT². Equipped with removable bellmouth for easy service.

BOTTOM BAR - Two back-to-back structural steel angles with powder coat finish to match curtain.

OPERATION AND STRUCTURAL REQUIREMENTS

Motor operation required.

Electronically interlocked chain hoist included for emergency manual operation. This product is supported by a guide assembly attached to the jamb construction. No additional header support is required unless hood supports are mandated by a larger opening width.

- ▶ Static up to 50 PSF design wind-load.
- ▶ Operational up to 10 PSF maximum wind-load.

OPTIONAL MATERIALS AND FINISHES

- ▶ Stainless Steel - 300 series in #4 finish.
- ▶ SpectraShield® Powder Coating in more than 180 colors.
- ▶ Upgrade to our SpectraShield Ultra™ powder coat for superior durability. This textured, polyester-based finish offers enhanced resistance to corrosion, abrasion, and scratching.

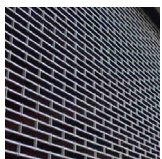
UNIQUE FEATURES

APEX™ CORE SMARTCONTROLLER - This IP54 (NEMA 3 equivalent) controller features plug-and-play connections to operator and standard sensors to reduce installation time. Its compact panel features an LCD screen for guided commissioning, electronic limit setting, and status/error messaging. A NEMA 4 upgrade is available.

MONITORED PROTECTION - Standard UL 325-2010 compliant, NEMA 4X-rated photo eyes allow for momentary contact operation. Interruption of the beam immediately halts and reverses the grille to the fully open position. The photo eyes are shipped loose as standard.

OPTIONAL SAFETYGARD LIGHT CURTAIN - For enhanced safety, add our optional light curtain, available in 3' or 6' heights depending on the height of the door. It installs directly into the door guide, ensuring a clean aesthetic. If an object breaks the invisible light beams, the door instantly stops and reverses.

120V COMPATIBILITY - The system is compatible with 120V input via an optional wall-mounted transformer. The required mounting space is 13.5" wide by 16.125" high.



CUSTOM-DESIGNED SOLUTIONS

Contact our experienced Architect Design Support Team for help in customizing our products to fit your specific application.

 www.architectdoorhelp.com