

HIGH PERFORMANCE LINE

EXTREME[®] 300 SERIES DOOR

Models EPD 300 (service door curtain) & EPI 300 (insulated curtain)



INTELLIGENT OPERATION AND HIGH CYCLE LIFE

CYCLES YOU NEED TO RUN YOUR BUSINESS

The easy-to-install Extreme[®] 300 Series Door offers 300,000 cycles of maintenance-free performance – maximizing uptime and improving productivity. It features a rugged springless design, eliminating a common point of failure in high-cycle doors. Ideal for applications requiring dependable uptime, but not a million cycle door. An upgraded 2-year 500,000 cycle warranty is available.

APEX PRO SMARTCONTROLLER™

An intelligent compact control panel featuring plug-and-play wiring makes installing and servicing the 300 Series Door easier than ever before. The LCD screen communicates door status messages, provides easy-to-follow instructions for door commissioning, and electronically sets door limits.

UNPARALLELED ENERGY EFFICIENCY

Yes, faster doors mean reduced air exchange, but the 300 Series Door goes further to improve energy efficiency. The insulated model has an R-value of 8.0 and features the patented Thermiser Max[®] perimeter sealing system – which meets ASHRAE[®] 90.12, 2015 IECC[®] and California's Title 24 air infiltration requirements with an independently tested value of less than 0.3 CFM/FT².

SMOOTH HIGH-SPEED OPERATION

The operator features a variable-frequency drive that ensures a soft start and stop – reducing wear and tear and operates at speeds of up to 24 inches per second. Plus, its direct drive design means there's no sprocket and chain. With flexibility in mind, the 300 series grille is compatible with a 120V service (requires transformer, provided with upgrade).

800.233.8366 | cornelliron.com

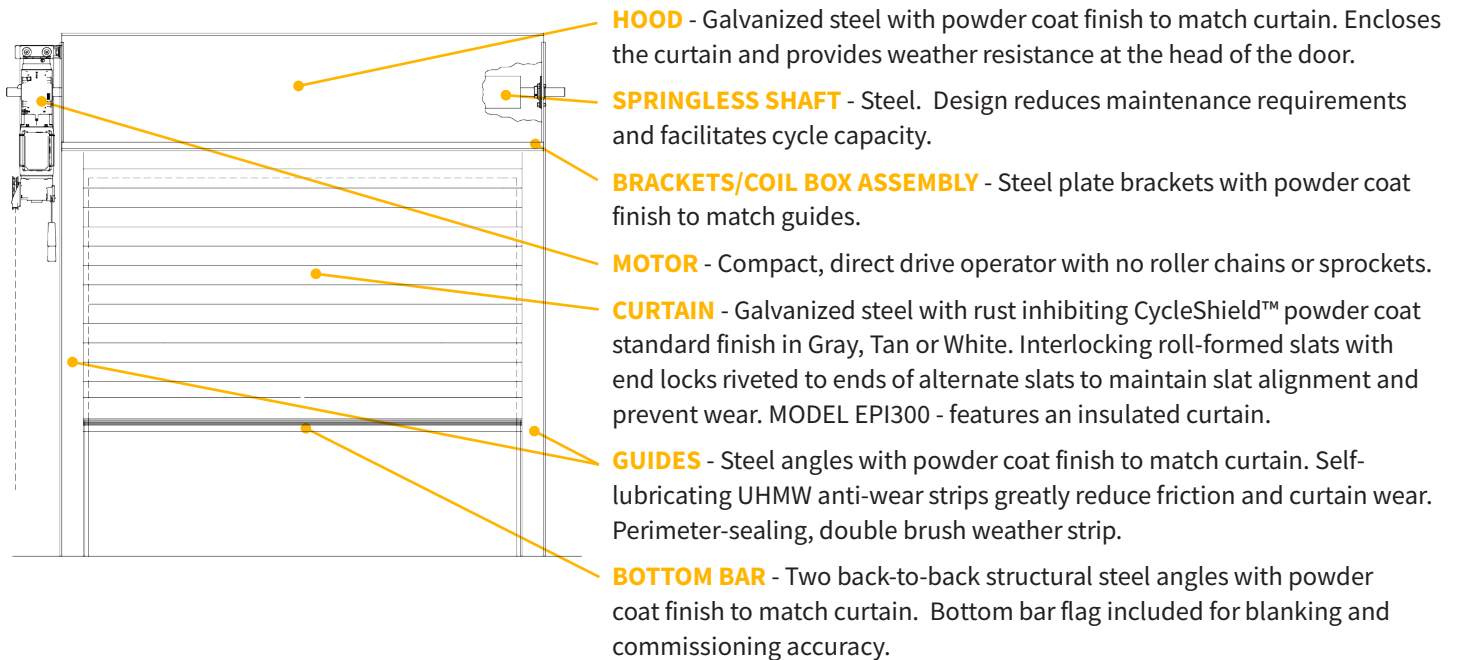
CornellCookson, LLC. is an ISO 9001:2015 registered company
3.2026

EXTREME SERIES

CORNELL
Innovative door solutions.™

HIGH PERFORMANCE LINE **EXTREME® 300 SERIES DOOR** Models EPD 300 & EPI 300 (insulated)

STANDARD COMPONENT MATERIALS AND FINISHES



OPERATION AND STRUCTURAL REQUIREMENTS

Motor operation required.

This product is supported by a guide assembly attached to the jamb construction. No additional header support is required unless hood supports are mandated by a larger opening width.

- ▶ Static up to 50 PSF design wind-load
- ▶ Operational up to 10 PSF maximum wind-load

OPTIONAL MATERIALS AND FINISHES

- ▶ Stainless Steel - 300 series in #4 finish
- ▶ SpectraShield® Powder Coating in more than 180 colors
- ▶ CycleShield™ Powder Coating is available in more than 180 colors in addition to the standard Gray, Tan, and White

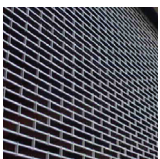
UNIQUE FEATURES

INTELLIGENT COMMUNICATION - The Apex Pro SmartController™ (NEMA 4) features plug-and-play connections to operator and standard sensors to reduce installation time. Its LCD screen provides step-by-step instructions for door commissioning, electronic limit setting, and status/error messaging in a compact control panel.

MONITORED PROTECTION, EVEN AT HIGH SPEEDS - The factory-mounted UL 325-2010 compliant photo eye sensors allow for momentary contact operation - useful in parking garages and other high-use openings. Interruption of the photo eye beam before the door fully closes causes the door to immediately halt downward travel and reverse direction to return to the fully open position.

SAFETYGARD LIGHT CURTAIN TECHNOLOGY - The 6' tall light curtain is installed within the guide and blends into its construction without a piece of slotted trim. If the grille is cycling and an object passes through the curtain beams, the door will immediately halt downward travel and reverse direction to return to the open position.

120V COMPATIBILITY - Compatible with 120V input by adding our transformer option. The transformer must be mounted to the wall and is 13 1/2" wide by 16 1/8" high.



CUSTOM-DESIGNED SOLUTIONS

Contact our experienced Architect Design Support Team for help in customizing our products to fit your specific application.

 www.architectdoorhelp.com

800.233.8366 | cornelliron.com

CornellCookson, LLC. is an ISO 9001:2015 registered company
3.2026

CORNELL
Innovative door solutions.™