

ROLLING FIRE DOOR

Models ERD10, ERD11(SmokeShield®), ERD20 (Insulated Firemiser™) & ERD21 (Insulated SmokeShield®)



STOP FIRE AND SMOKE IN THEIR TRACKS

TAILORED LIFE SAFETY SOLUTIONS

Our fire doors help save property, and more importantly, lives. Our advanced Fire Door Systems offer industry-leading, intelligent operation that:

- ▶ Activate thermally or electrically to contain fire and smoke spread
- ▶ Easily - or even automatically - reset

ENHANCED SMOKE PROTECTION

The ERD21 model provides SmokeShield® smoke and draft control that conforms to UL1784. This ensures that smoke will be compartmentalized with the fire and not spread quickly throughout the facility, allowing safe egress for occupants.

CUSTOM BUILT FOR EVERYDAY USE

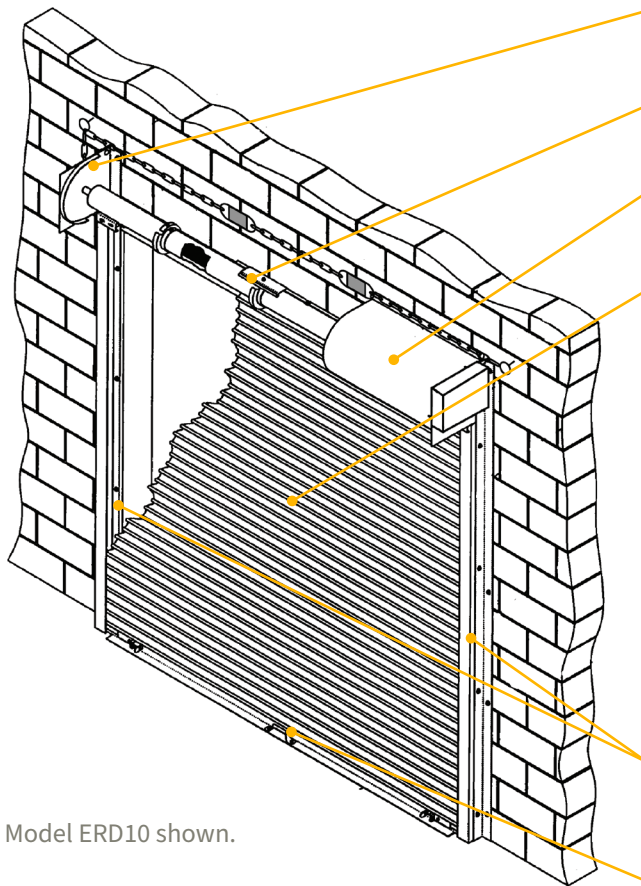
Designed for fire-rated openings, our fire doors provide security and control in openings and are for use in openings that are not part of a required means of egress. They are Factory Mutual Approved, listed with California Office of State Fire Marshal and UL listed for fire protection ratings of 3/4, 1 1/2, 3 and 4 hours.

INSULATED ROLLING FIRE DOOR OPTION

The Firemiser insulated fire door contains mineral wool which helps control climate and reduce sound transmission. It features an R value of 5.3 and a U Value of .189 based on the ASHRAE Handbook of Fundamentals. This door is ideal for a climate-controlled environment because it helps maintain a different temperature on the interior and exterior of the door.

FIRE PROTECTIVE CLOSURES **ROLLING FIRE DOOR** Models ERD10, ERD11, ERD20 & ERD21

STANDARD COMPONENT MATERIALS AND FINISHES



Model ERD10 shown.

BRACKETS - Steel with powder coating to match curtain. Bolt to guide assembly and support counter-balance shaft curtain.

COUNTER-BALANCE SHAFT - Steel. Supports curtain and contains torsion springs for assisting operation.

HOOD - Galvanized steel with GalvaNex™ polyester enamel finish to match curtain. Encloses the curtain and provides fire protection at the head of the door.

CURTAIN

FIRE DOOR MODEL ERD10

Interlocking roll formed slats of galvanized steel with GalvaNex™ polyester enamel finish in Gray, Tan, White or Brown. Cast iron end locks are riveted to the ends of alternate slats to maintain alignment and prevent wear.

FIRE DOOR MODEL ERD20

Double skin interlocking roll formed slats of galvanized steel, with GalvaNex™ polyester enamel finish in Gray, Tan, White, or Brown filled with mineral wool insulation. Flame spread and smoke development index factors are zero as tested to ASTM E84. Cast iron end lock/wind locks are riveted to the slats to maintain alignment, lock curtain into guides and prevent wear.

GUIDES - Structural steel with powder coating to match curtain. Guide assemblies bolt to the wall and support the weight of the door.

BOTTOM BAR - Two back-to-back structural steel angles with powder coating in Gray, Tan, White or Brown. Lock mechanisms available.

OPERATION

Alarm-activated AlarmGard® and a variety of motor options are the superior choice.

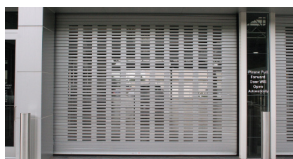
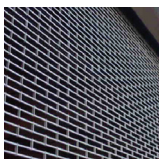
Fusible-link-activated chain, crank or motor options are available for openings that are not in a pedestrian thoroughfare and where electrical activation is not desired.

OPTIONAL MATERIALS AND FINISHES

- ▶ Stainless steel - 300 series in #4 finish
- ▶ SpectraShield® Powder Coating in more than 180 colors
- ▶ For a more durable finish, consider upgrading to our GalvaNex™ Ultra™ or SpectraShield® Ultra™ powder coat finish

Brackets, Guides and Bottom Bar

- ▶ Hot-dip galvanizing on steel components
- ▶ Zinc-enriched, corrosion-resistant powder coating in Gray



CUSTOM-DESIGNED SOLUTIONS

Contact our experienced Architectural Design Support Team for help in customizing our products to fit your specific application.

 www.architectdoorhelp.com