

CORNELL

Patented*

SentryGate®4 Model ESG21

Practical Design Applications

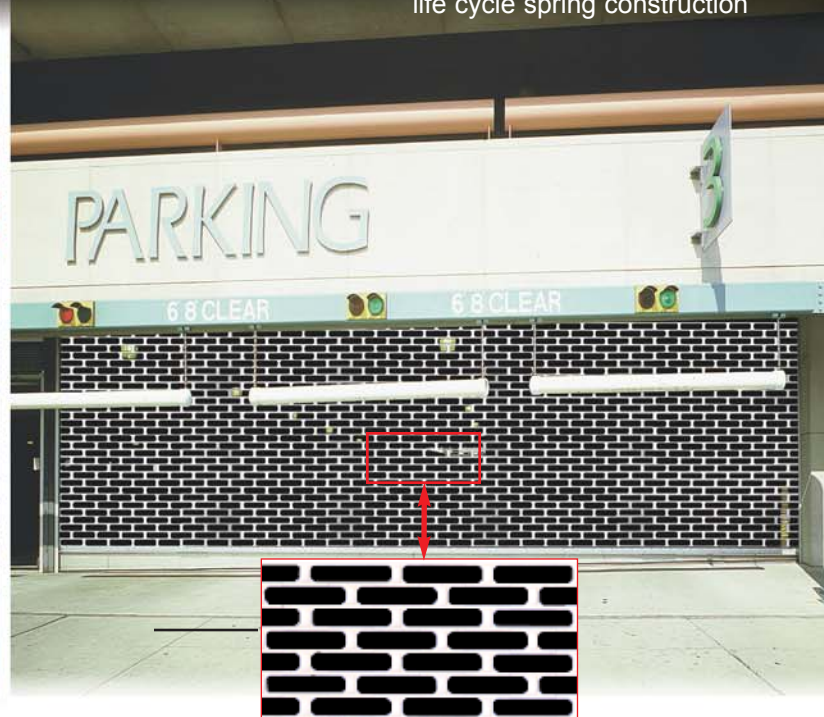
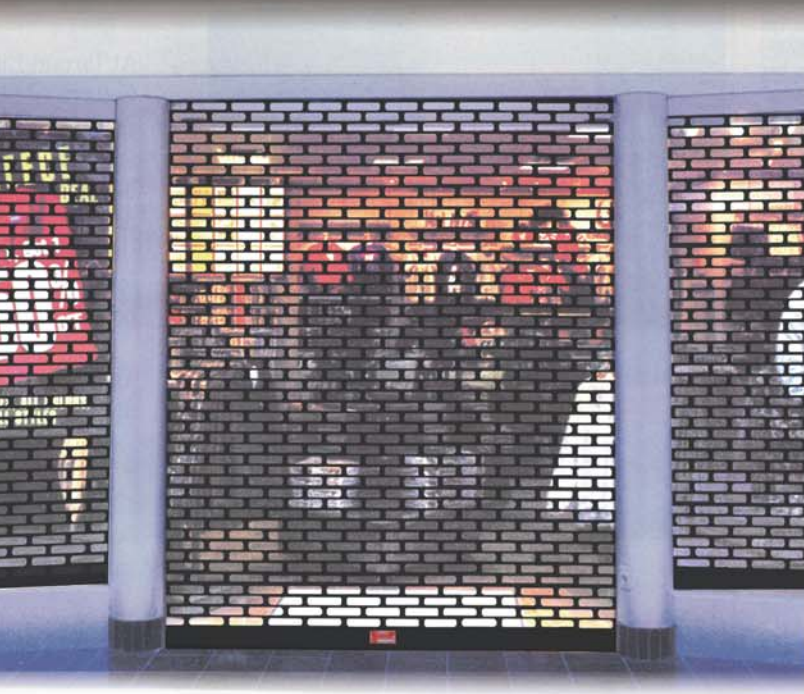
- High Cycle Applications - reliable access control for secured openings that require frequent open/close cycling.
- Mall Storefronts - provide security, visibility and airflow on storefront openings.
- Behind Storefront Glass - add security to stores while maintaining visibility when closed.
- Schools & Public Buildings - control traffic flow by closing off corridors and unused spaces.
- Public Transportation Facilities - use for traffic control applications and to close off unused space.

Benefits

- High strength injection molded links with aluminum rods spaced 2" on center stand up to heavy use.
- Increase protection while maintaining visibility.
- Aesthetically pleasing, appliance like design.
- Unique design locks curtain into guides.
- Lightweight/compact design allows for interior mounting to existing construction.
- Can require up to 5" less headroom than traditional rolling grilles.
- Contour curtain profile allows unit to tightly store in an overhead coil.
- Units are built to exact opening size requirements.
- Little to no routine maintenance.
- Q/S Program - Cornell can manufacture and ship most standard SentryGate® units in one to two weeks.

Available Options

- Hoods and fascias
- Cylinder locks with or without an interior thumbturn
- Bottom bar astragal or sensing edge for motorized units
- Bottom bar ceiling closure plate
- Operator covers for exterior mounted units or exposed operators below 8'-0" high
- Emergency manual release system
- Motor mounted interlock device
- Sloping or irregular sills
- Fixed guide mullions
- Removable guide mullions
- Corner mullions
- High cycle shaft and/or maximum life cycle spring construction



Perfect for Storefront Applications

The SentryGate®4 is a perfect fit for retail store applications. Its design is suited for mall openings as well as for additional protection behind storefront glass. Its smooth profile curtain provides safe operation and its contour shape allows tight coiling and a small, unobtrusive coil. Curtains are readily available with a black or white matte finish. Other exposed components are high strength mill finish aluminum or can be finished to match curtain. Units will fit into most existing storefront applications.

The Ultimate High Cycle Grille

The SentryGate®4 is perfect for high cycle use when visibility and airflow is desired for applications like parking garages and sally ports. Its 65% open brick pattern curtain is composed of high strength injection molded links concealing continuous horizontal metal rods. Unlike conventional metal grilles that use rods, chain links and/or grommets that deteriorate with high usage, the SentryGate's® design eliminates these problems. The SentryGate® will maintain structural integrity and a clean look, even with heavy use. Optional features include high cycle shaft and maximum life cycle spring construction.

SentryGate®4 Components



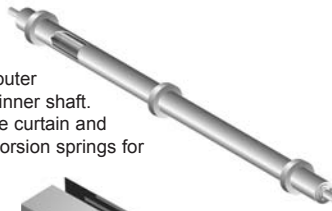
Brackets
Minimum 3/16" steel plates bolt to guide supporting member and support counter balance shaft and curtain.

Standard Material & Finish: steel, with SpectraShield® powder coating 30-7192 gray

Counter-balance Shaft

4-1/2" minimum diameter outer shaft and 1-1/4" minimum inner shaft. This assembly supports the curtain and contains counter-balance torsion springs for assisting operation.

Standard Material: steel



Optional Hood & Fascia

(not normally provided when unit is concealed above a ceiling)
Protective sheet metal enclosure for the curtain.

Standard Material & Finishes: Galvanized steel with exclusive GalvaNex™ finish in light gray or aluminum in mill, clear or color anodized



Guides

Extruded aluminum sections equipped with polypropylene pile runners and mounting member. Support the entire weight of the unit.

Standard Material & Finish: mill finish aluminum

Optional Finishes: clear and color anodized aluminum

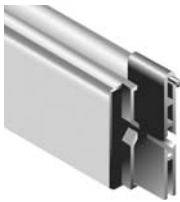


Bottom Bar

2" x 3 1/2" heavy duty extruded aluminum tubular section that houses optional locking mechanisms.

Standard Material & Finish: mill finish aluminum

Optional Finishes: clear and color anodized aluminum



Curtain

65% open brick pattern curtain design consisting of high strength injected molded components and full width concealed aluminum rods at 2" on center.

Material & Finishes: exposed curtain components in black or white matte finish, concealed aluminum rods are mill finish



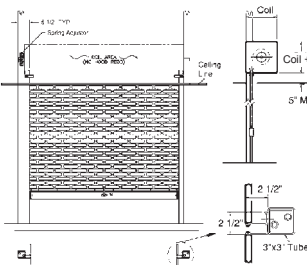
Operation

Push-up operation shown. Hand crank, chain and motors are available. Grilles operate by rotating the shaft gear end. The opposite end of shaft applies spring tension and is equipped with a spring adjusting wheel.

Self-Supporting Installation Option

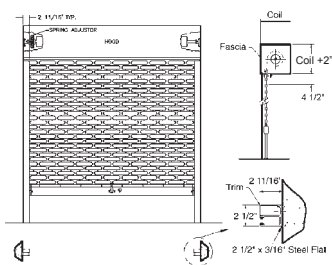
Many grille installations utilize structural steel tubes for support, which allows for installation prior to the walls and ceiling being built. The tubes are factory prepared for the attachment of all grille components. Tubes are attached to the floor slab below and the joists above, thereby becoming self-supporting.

Mounting & Clearances



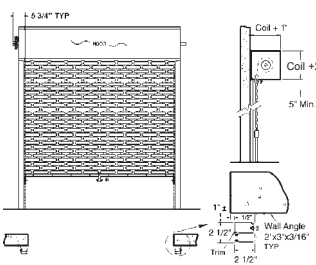
Between Jambs Self-Supporting

Mounts to structural tubes that are attached to the floor slab and braced to the structure above.



Between Jambs Conventional

Mounts within the opening, fascia (front hood closure piece) required.



Face of Wall

Maintains clearance of full opening, minimal exposed components.

SentryGate®4 grilles are built to order to fit specific dimensions from 3'0" wide by 3'0" high, to a maximum size of 23'4" wide by 14'0" high.

Special Feature Options

- Manual Release System - for use with motorized grilles to meet building code exit requirements. A wall mounted pull handle disengages the motor allowing the grille to partially open for egress.
- Motor Mounted Interlock - is an overload sensing device that prevents damage if motor operation is attempted when the grille is locked. Field wired guide mounted interlocks are no longer necessary.
- Sloping or Irregular Sills - designed to meet odd floor conditions including slopes, curbs or rails.
- Fixed Guide Mullions - are provided to use multiple units side by side on wide openings utilizing minimal guide track space.
- Removable Guide Mullions - used on wide openings that require full access on a limited basis.
- Corner Mullions - allow guides from two units to be mounted at 90° on a common tube utilizing an over/under coil set up.



Finish Choices

- Curtains are readily available with a black or white matte finish.
- Surrounding components are aluminum mill as standard, but are available in clear or color anodized or with a select color powder coat finish.

Opening Height	Coil Size*
up to 5'4"	11"
5'5" - 8'0"	12"
8'1" - 10'10"	13"
10'11" - 14'0"	14"

*Coil size may be slightly larger for high cycle units. Consult factory whenever coil size is critical!

CORNELL
SAFE AND SECURE

An ISO 9001:2000 Registered Company

Crestwood Industrial Park
Mountaintop, PA 18707
TEL 800.233.8366 • FAX 800.526.0841
Engineering Design Services: Ext. 551
Website: www.cornelliron.com
Email: cornell@cornelliron.com