

EST #:	*
JOB #:	*
ITEM #:	*

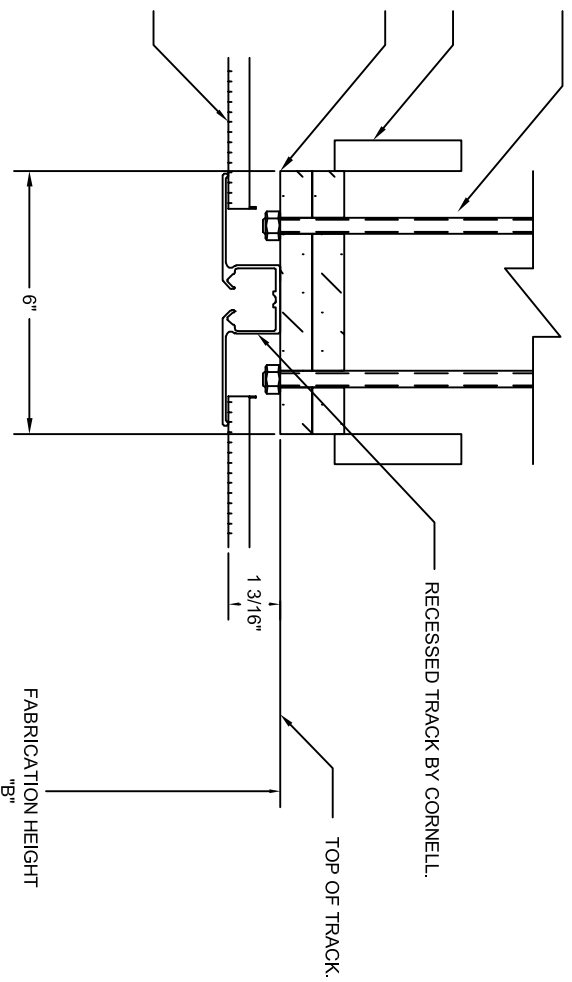
RECESSED TRACK

3/8" DIA THREADED RODS WITH NUTS AND WASHERS ATTACHED TO STRUCTURAL SUPPORT ABOVE BY OTHERS (24" O.C. IN OPENING AND 12" O.C. IN STACK AREA).

INSULATE AS REQUIRED FOR SOUND ATTENUATION BY OTHERS.

(2) LAYERS 3/4" X 6" X CONTINUOUS PLYWOOD GLUED & SCREWED TOGETHER WITH STAGGERED JOINTS BY OTHERS. HEADER MUST BE PARALLEL TO THE FLOOR WITH MAXIMUM TOLERANCE OF +/- 1/4". TRACK BY CORNELL.

CEILING BY OTHERS.



FINISHED FLOOR

NOTE:  
ALL TRACK IS TO BE FASTENED TO THE HEADER BY USING THE #10 X 2 1/2" FLAT HEAD FULL THREAD SCREWS PROVIDED WITH DOOR BY CORNELL.