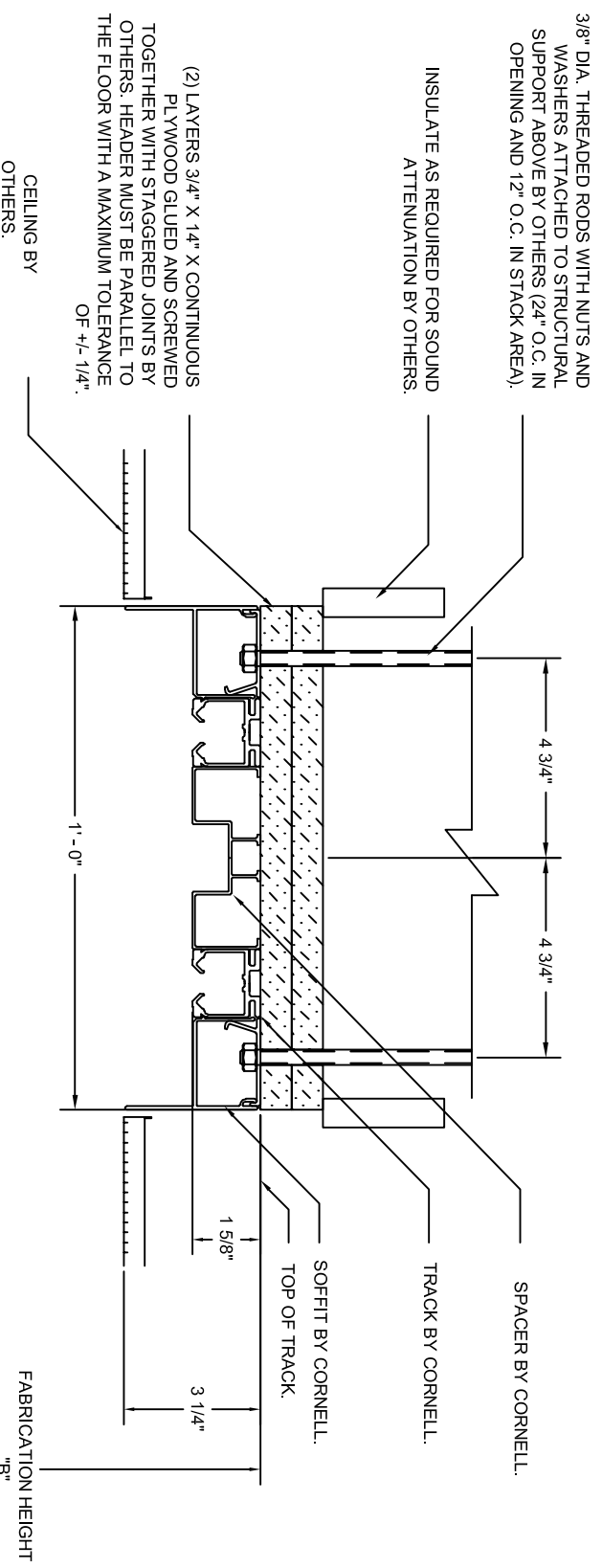


EST #:	*
JOB #:	*
ITEM #:	*

SPACING)  
SURFACE TRACK (6")  
WITH SOFFIT



NOTE:  
ALL TRACK IS TO BE FASTENED TO THE HEADER BY USING THE #10 X 2 1/2" FLAT HEAD FULL THREAD SCREWS PROVIDED WITH DOOR BY CORNELL.

