

EST #:	*
JOB #:	*
ITEM #:	*

1/2" DIA THREADED RODS ATTACHED TO STRUCTURAL SUPPORT WITH NUTS AND WASHERS BY OTHERS. 12" O.C. IN THE STACK AREA AND 18" O.C. ACROSS THE OPENING.

PROVIDE RATED CONSTRUCTION CORRESPONDING TO RATING REQUIRED FOR OPENING BY OTHERS.

(2) LAYERS 3/4" THICK PLYWOOD, 15" (+/- 1/2") WIDE AND CONTINUOUS FOR THE ENTIRE LENGTH OF OPENING AND POCKET, TERMINATING NO MORE THAN 1/2" FROM BACK WALL OF POCKET. SEE NOTES 1 & 2.

(1) LAYER OF 3/4" PLYWOOD, 17 1/4" (+/- 1/4") WIDE AND CONTINUOUS FOR THE ENTIRE LENGTH OF THE OPENING AND POCKET, TERMINATING NO MORE THAN 1/2" FROM BACK WALL OF POCKET. SEE NOTES 1 & 2.

(2) LAYERS 5/8" THICK GYPSUM BOARD, 6 1/2" WIDE AND CONTINUOUS FOR THE ENTIRE LENGTH OF OPENING AND POCKET. TYPICAL ON EACH SIDE OF HEADER. SEE NOTE 3.

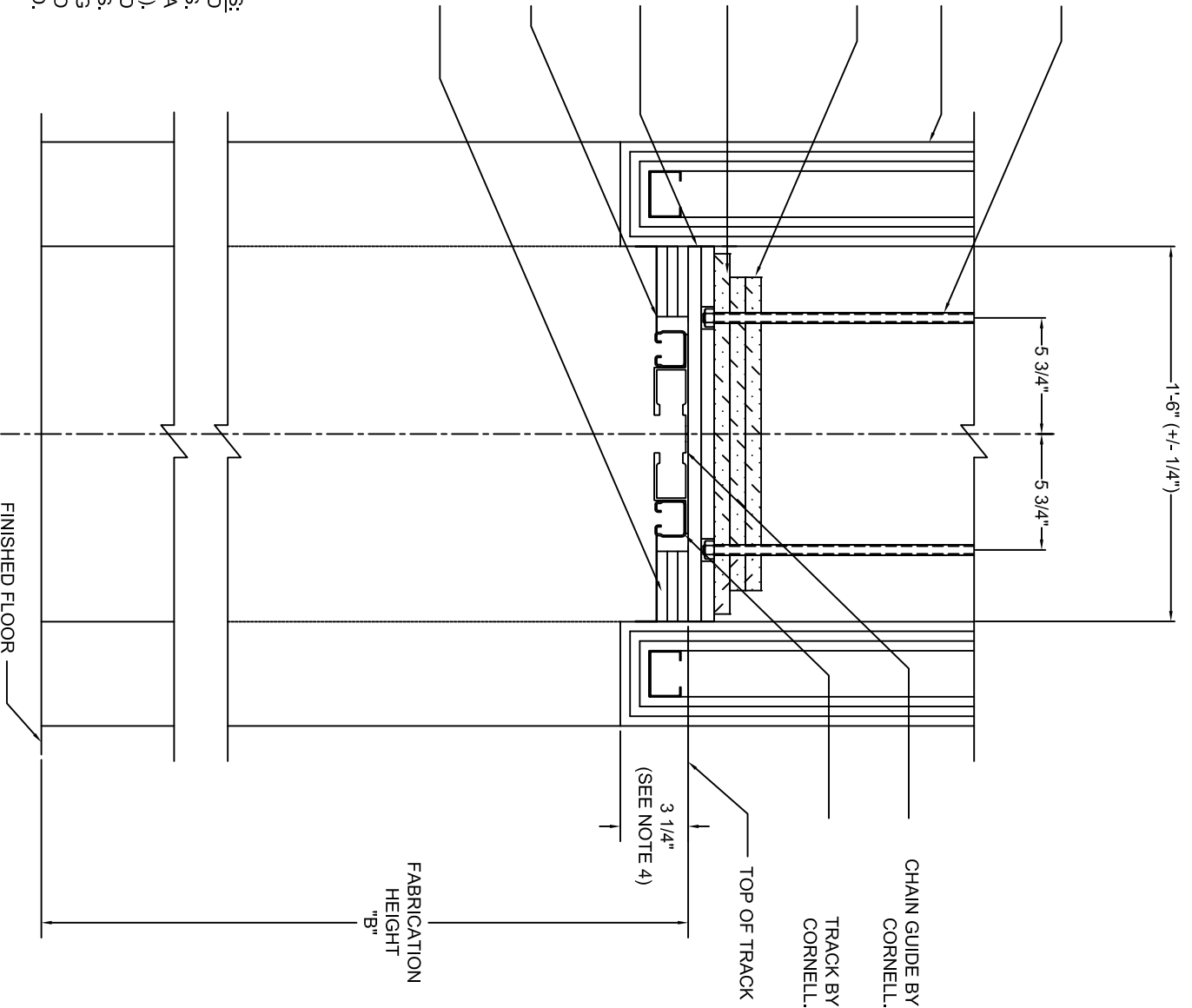
METAL FLASHING BY CORNELL.

(3) LAYERS 1/2" THICK GYPSUM BOARD, 3 5/8" WIDE AND CONTINUOUS FOR THE ENTIRE LENGTH OF OPENING AND TERMINATING 12" FROM THE BACK OF THE POCKET. TYPICAL ON BOTH SIDES OF HEADER. SEE NOTE 3.

NOTE: ONLY SCREWS ACCEPTABLE AT LAP JOINTS

NOTES:

1. ALL PLYWOOD TO HAVE STAGGERED JOINTS, GLUED AND SCREWED TOGETHER AT 24" O.C. BY OTHERS.
2. HEADER MUST BE PARALLEL TO THE FLOOR WITH A MAXIMUM TOLERANCE OF (+/- 1/4").
3. ALL GYPSUM TO BE FURNISHED, FINISHED, AND FIELD PAINTED BY OTHERS.
4. MINIMUM DIMENSION REQUIRED TO MEET U.L. LABELING REQUIREMENTS. THE DIMENSION MAY BE INCREASED TO FURTHER RECESS THE HEADER IF REQUIRED.



5
A
HEADER DETAIL