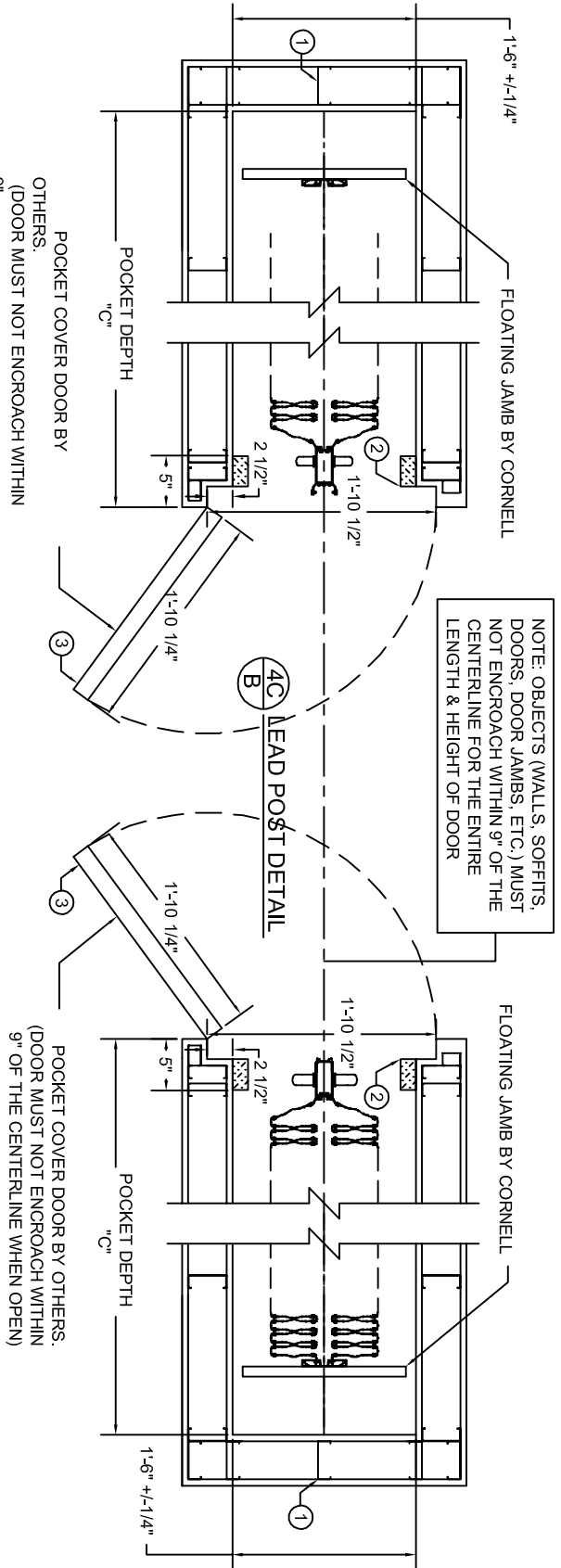


EST #:	*
JOB #:	*
ITEM #:	*



- KEY:**
1. CONTINUOUS BACKING BY OTHERS.
  2. 1 1/2" X 3" X CONTINUOUS HEIGHT WOOD JAMB STOPS BY OTHERS.
  3. POCKET DOOR OPTION BY CORNELL (OPTIONAL FOR DOORS WITH FLOATING JAMB).

