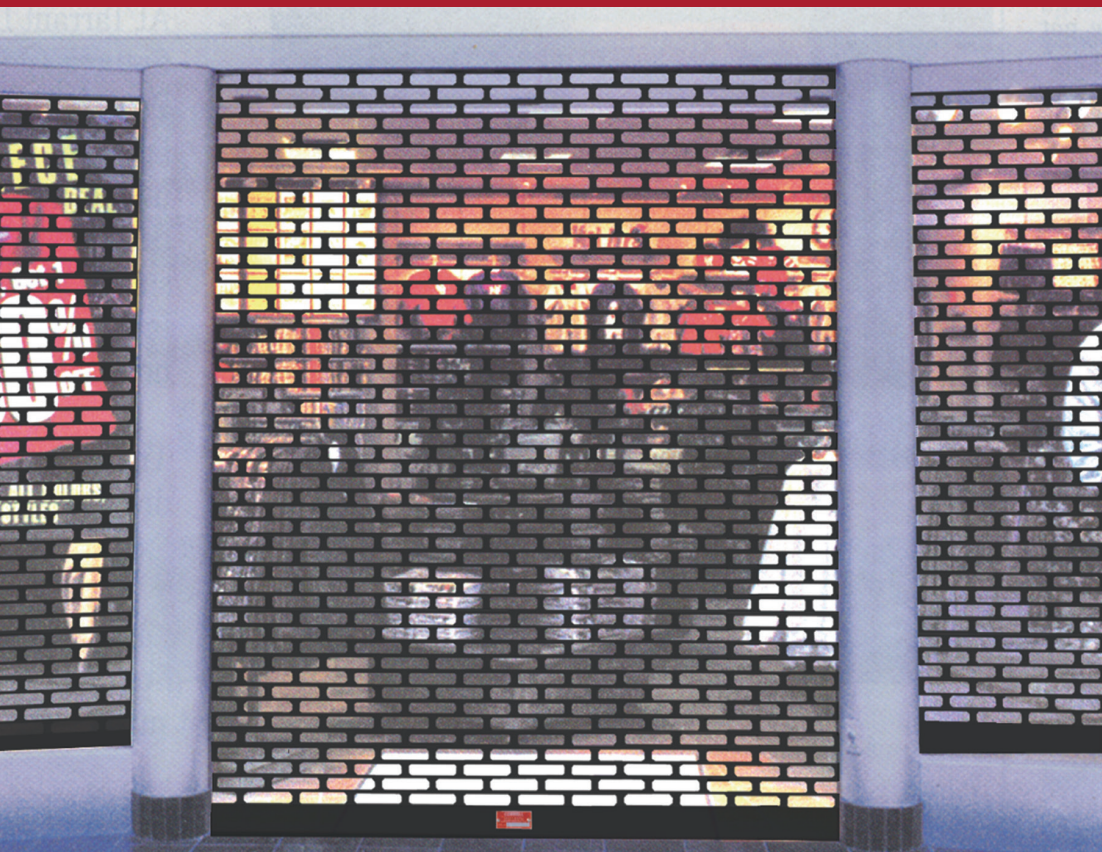


ROLLING GRILLES

SENTRYGATE® GRILLE

Models ESG20 (compact) & ESG21 (full-sized)



SECURITY, VISIBILITY AND AIR FLOW FOR STORES AND MORE

SECURE PROTECTION

Featuring a unique curtain comprised of injection molded components and continuous metal rods, the SentryGate Grille provides the ultimate protection to a parking garage entrance, in front of or behind a glass storefront or closed pharmacy counter.

ALTERNATE AESTHETIC

The SentryGate's patented design is an alternative to traditional rolling or counter grilles and is available in white or black. The contoured curtain profile allows the unit to tightly store in an overhead coil.

HEAVY ON SECURITY, LIGHT ON WEIGHT

Efficient design allows for interior mounting to existing construction.

COMPACT UNIT AVAILABLE

Typically, the compact unit is installed in spaces where a counter door would be used, such as pharmacy or concession counter openings. The full sized unit is typically used for full sized or very wide openings.

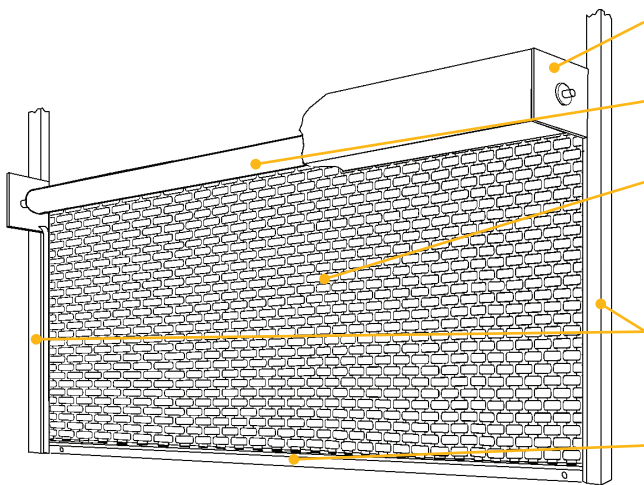
800.233.8366 | cornelliron.com

CornellCookson, LLC. is an ISO 9001:2015 registered company
9.2017

CORNELL
Innovative door solutions.™

ROLLING GRILLES **SENTRYGATE® GRILLE** Models ESG12 (compact) & ESG21 (full-sized)

STANDARD COMPONENT MATERIALS AND FINISHES



BRACKETS - Steel with powder coating in Gray. Bolt to guide assembly and support counter-balance shaft and curtain.

COUNTER-BALANCE SHAFT - Steel. Supports curtain and contains torsion springs for assisting operation.

CURTAIN - 65% open brick pattern design made of high strength injection molded components and full width concealed aluminum rods at 2" on center. Exposed curtain components come in a black or white finish and rods are supplied in mill finish.

GUIDES - Extruded aluminum in mill finish, polypropylene pile runners and mounting member. Bolt to the wall and support the weight of the grille.

BOTTOM BAR - Heavy-duty extruded aluminum. Compact unit is equipped with a vinyl astragal/weather-seal to cushion the contact point on the counter.

The SentryGate® has been awarded U.S. Patent No. 6,189,593

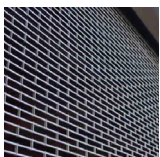
OPERATION AND STRUCTURAL REQUIREMENTS

Hand-crank, push-up and a variety of motor options are available.

This product is supported by a guide assembly attached to the jamb construction or structural tubes attached to either wall or overhead construction. No additional header support is required unless hood supports are mandated by a larger opening width.

OPTIONAL MATERIALS AND FINISHES

- ▶ Aluminum in clear and color anodized finish
- ▶ Stainless steel 300 series in #4 finish
- ▶ SpectraShield® powder coating in more than 180 colors
- ▶ Hoods available as an option. Galvanized steel with exclusive GalvaNex™ polyester enamel finish in Gray or SpectraShield Powder Coating in more than 180 colors; aluminum in mill, clear and color anodized finish; or 300 series stainless steel with a #4 finish



CUSTOM-DESIGNED SOLUTIONS

Contact our experienced Architectural Design Support Team for help in customizing our products to fit your specific application.

 www.architectdoorhelp.com

800.233.8366 | cornelliron.com

CornellCookson, LLC. is an ISO 9001:2015 registered company
9.2017

CORNELL
Innovative door solutions.®